



# Seetrac : Tender tracking solutions

**SOLO,DUO and TRIO** are "**Plug and Play**" tender-tracking solutions from Seetrac, designed to provide feature-rich performance, in a modern robust package. The **KITS** come complete with all necessary parts, cabling, connectors, can be installed easily, and are configured to work "out of the box".

The tender or jet-ski position is displayed on an Electronic Chart System (ECS), such as Nobeltec Admiral 9.0 ,Transas NS3000 ECS-I / ECDIS-I and Kongsberg K-Bridge. Other systems will be available soon, see website for latest information.

In addition, speed, course and alarm status of the tender are also shown.

"**PANIC**" buttons can be fitted to all tenders and jet-skis, summoning help from crew by raising a visual and audible alarm on the bridge of the main vessel.

"**ON-TOW**" function alerts crew if the tow-rope breaks whilst under-way, or if a tender had drifted off during the night if rafted behind the boat.

## Features :

- "**PANIC**" and "**ON-TOW**" Alarms : on main vessel ECS + relay contact
- Tender depth available for viewing in main vessel Electronic Chart System
- Private Seetrac Wireless Link™ ; not a public transmission system
- **Your** tenders and jet-skis shown on **your** chart only.....nowhere else
- Seetrac alarms are output from the Base Unit as a relay contact closure
- Intelligent Power Management : Ensuring low power consumption
- Seetrac unit limits number of GPS/Depth units required on the tender
- Remote Ignition Control™ : remote/automatic vessel ignition "STOP" function
- FCC & EU approved transmission system
- Tender, Jet-ski and Portable units available
- Easy to self-install with simple and readily available hand tools



**Fig.1 Base & Tender Unit**

**Fig.2 Tender Install**



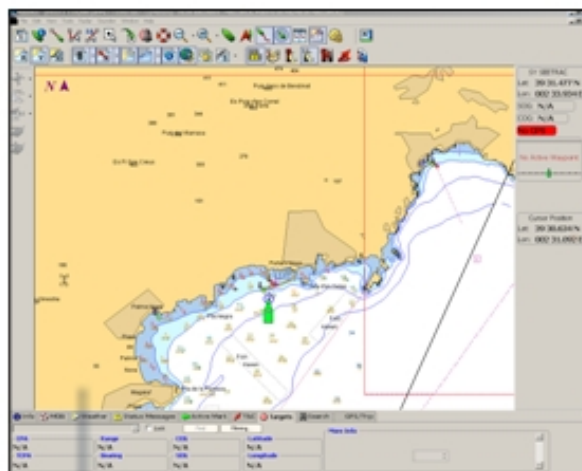
**Fig.3 Jet-ski install**



sol du tri



# Seetrac : Target Management Solutions



## Transas NS 3000 ECS-I / ECDIS-I

## Nobeltec Admiral 9.0

### Sounding

Using the Tender as a "Scout"; providing real-time depth information at a glance on the bridge chart system. Particularly useful for surveying reefs and sand bars, or scouting into uncharted or unknown anchorages ahead of the main vessel.

### Tender Instrumentation

Seetrac GPS and Depth transducer information is made available as an output from the Seetrac transponder, to be displayed locally on the tender via a digital display.

Information available locally includes : boat speed/course/depth/position/water temp.

An optional Seetrac Depth Transducer can be fitted to the tender. Either in-hull, thru-hull or transom mount units are available, to allow installation in all types of craft. Existing tender information can also be used to drive the Seetrac unit.

### Range

Typically 5 NM+, related to antenna height / Main Vessel cable type / Length.

### Frequency

European / US licence free. FCC Compliant.

### Electronic Chart System Software Interface

Transas NS3000 ECS-I / ECDIS-I / NS 4000 ECDIS-I

Nobeltec Admiral 9.0 / 10.0

Kongsberg K-Bridge

Navmaster Professional / Superyacht

Interface to Non-Seetrac ECS, with full Panic Button functionality (relay contact)

For our full range of Tracking products please visit [www.seetrac.com](http://www.seetrac.com)



C  
o  
n  
f  
i  
d  
e  
n  
c  
e



# Seetrac : Plug and Play Tender Tracking solutions



Fig. 4 Product Range



Fig.5 Alert Button



Fig.6 Tender Antenna

## Technical Specifications.

- Power supply requirements : 12 to 24 V DC / 1A
- Current consumption : Standby 40mA / Transmission < 1A
- Operating frequency : EU & FCC compliant 868/915MHz
- Operating range : Typically 5nm
- Enclosure certification : IP67 / Shockproof
- Unit weight : 8oz / 226 g
- Dimensions (H/W/D) : 4in (10cm) / 3in (7.5cm) / 1in (2.5cm)
- Antenna height : (Stubby 0.1m (4in) / med gain 0.4m/16in)  
high gain 1.25m/4 ft
- Temperature Range : -30°C to +80°C
- GPS : SIRF Star III chipset
- Duty cycle : < 1:10 (Tx can be sustained continuously)
- Short circuit Aerial protection : Indefinite
- System Heat Dissipation : Negligible. No external cooling required

## System Options.

- Illuminated Stainless Steel Alert button (pre-terminated) + 3m tail
- Remote Ignition Control (Jet-ski)
- High gain antennas / Low loss co-ax cable / Aerial brackets
- Portable Unit, available for sailing dinghies, canoes, etc
- Depth transducer (transom/thru-hull/in-hull)

For our full range of Tracking products please visit [www.seetrac.com](http://www.seetrac.com)



Applied Technology...